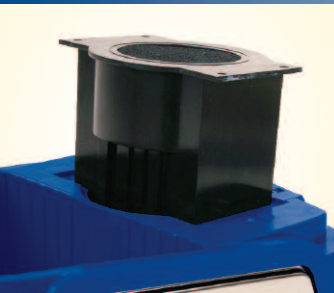


WhisperClean™

Canister Vacuum Cleaner

**Next Generation Filtration, Sound,
Performance and Value**



The WhisperClean™ vacuum by Euroclean ushers in a new generation of vacuums. From the ground up, WhisperClean™ was conceived and engineered to define the word value. WhisperClean™ features powerful suction, state of the art filtration, innovative features and serviceability. The Next Generation in cleaning is here today.



Euroclean

Quiet Cleaning – Intensive Cleaning

Perfect for daytime cleaning which can:

- Lower overall wages
- Save electrical, heating and cooling costs
- Attract a higher caliber of employee
- Reduce turnover and training
- Reduce time supervising staff
- Better cleaning due to better lighting during the day



Applications:

- Hotels
- Offices
- Schools
- Health Care
- Retail Stores
- Government Facilities
- Restaurants
- Entertainment

Cleaning Anytime, Anywhere

Now it's possible with the WhisperClean™. The WhisperClean™ is so quiet that daytime cleaning is now a reality. Boost productivity and drive down the cost to clean by doing it during the day. At a sound level of 53dB, the WhisperClean™ is able to go wherever and whenever cleaning is required. Clean occupied offices, health care facilities, hotels and restaurants without disturbing business.

Power and filtration for better cleaning

The WhisperClean™ is equipped with a powerful 1200 watt, 1.6hp motor rated for continuous use. It is designed to perform heavy cleaning of high traffic areas like lobbies and entry ways.

Euroclean once again leads the way in true H.E.P.A. filtration technology. The WhisperClean™ is the only commercial

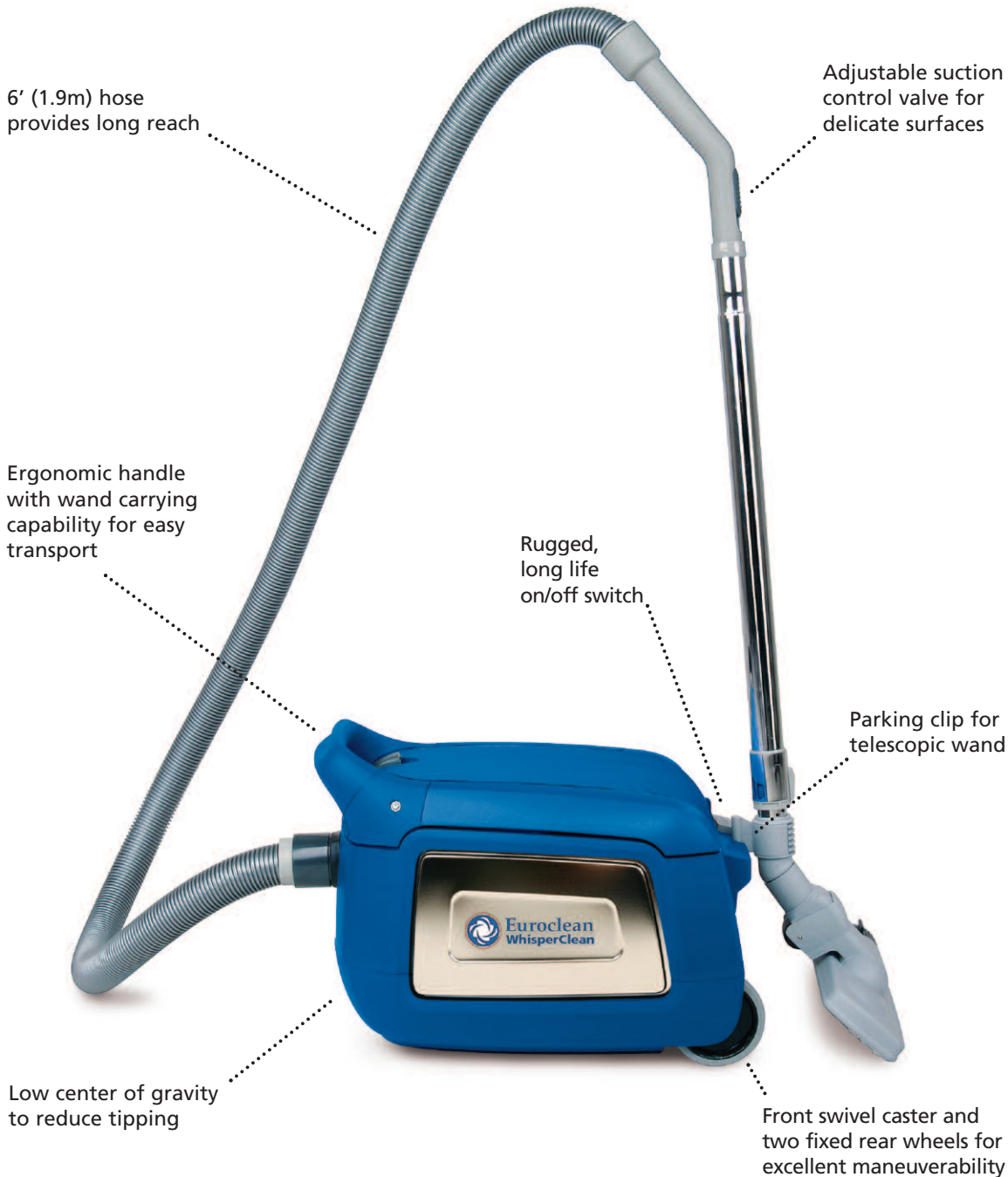
vacuum that offers both pre and post fan H.E.P.A. filters* that capture particles 0.3 microns and larger.

Compared to upright vacuums, canister vacuums have less handle weight and are less fatiguing for the user, more versatile in locations that have hard and soft floors, easier to maneuver in difficult areas like stairwells and are the best choice for dusting applications. Canister vacuums also have the lowest total cost of ownership. Canister vacuums have less moving parts and fewer repairs, which saves money and maximizes productivity.

If your goal is drive down costs while providing a cleaner facility, then WhisperClean™ is the smart choice.

* Pre-fan H.E.P.A. filter available early 2004.

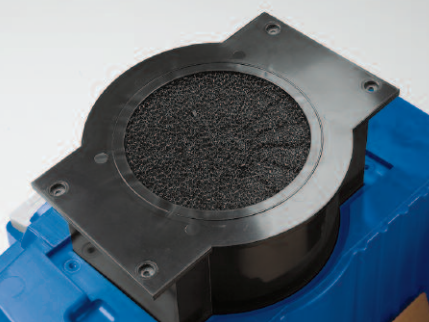
WhisperClean™ Canister Vacuum Cleaner



Combination cord storage and wand holder provides one handed transport



50' (15m) electrical cord to maximize productivity



Designed for serviceability, the motor-cassette can be easily changed with a screwdriver and no internal wiring



Post-fan H.E.P.A. filter traps 99.97% particles that are 0.3 microns or larger and can easily be accessed without tools



WhisperClean™ Power:

- Large 1,200 watt, 1.6 hp motor cleans better
- Heavy duty commercial motor provides long life
- Best suction power in its class (290 watts)

WhisperClean™ Filtration:

- First commercial vacuum to offer pre and post fan H.E.P.A. filter options
- A true H.E.P.A. filtration vacuum for improved indoor air quality
- Best in class filtration for a cleaner facility with less dusting later

WhisperClean™ Value:

- Quiet operation for daytime cleaning — lowers costs
- Durable and rugged for years of heavy duty use
- Lowest total cost of operation and ownership

WhisperClean™ Productivity:

- One machine cleans facilities with multiple floor surfaces
- Less moving parts with less repairs and easy serviceability
- Less fatiguing to use for faster cleaning with less effort

Euroclean products are necessary cleaning equipment used for every-day commercial cleaning applications.

You can get expert service and maintenance for your products by factory-trained personnel around the world, as well as fast parts delivery.

Maintain peak performance with Nilfisk Genuine OEM Parts.

 Nilfisk Genuine OEM Parts

Technical Specifications

Voltage:	115 volts
Rated Power:	1,200 watts, 1.6 hp
Protection Class:	Class II, Double Insulation
Air Flow:	70 CFM (33 L/sec)
Vacuum:	21 kPa
Waterlift:	82.7 in (2.1 m)
Suction Power @ Nozzle:	290 watts
Sound Pressure Level: ISO 11203	53 dB A
Standard Filtration:	4 Levels
Optional Filtration:	Pre* and Post Fan H.E.P.A.
Dust Bag Capacity, Net:	2.4 gal (9 L)
Weight with Electric Cord:	21 lb (9.6 kg)
Dimensions:	13.5 in (344 mm) height x 14.2 in (359 mm) width x 18.2 in (464 mm) depth
Cable Length:	50 ft (15 m)
Part Number:	905 6608 010



Specifications are subject to change without notice.
*Pre-fan H.E.P.A. filter available early 2004.



Euroclean

14600 21st Avenue North
Plymouth, MN 55447-3408
www.kenturoclean.com
Phone: 800-545-4372
Fax: 866-261-4779

396 Watline Avenue
Mississauga, Ontario, Canada L4Z 1X2
www.kenturoclean.com
Phone: 800-668-8400 or 905-712-3260
Fax: 800-263-5111 or 905-712-3255